

Electronic Instrumentation

Problem sheet: LogAmp

2010/2011 module 2

P. Stallinga



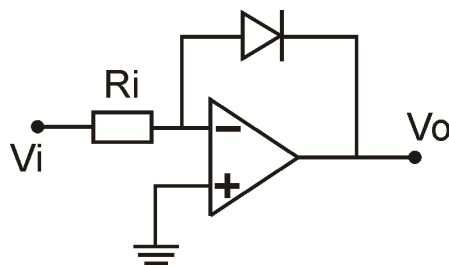
UAlg
UNIVERSIDADE DO ALGARVE



MIEET 3º ano

The circuit below, a logarithmic amplifier, looks very much like the superdiode, however, note that the output is after the diode, instead of before.

- Determine the relation between V_o and V_i .



- Make the circuit below have characteristics of

$$V_o = \ln(V_i) ; 0.1 \text{ V} < V_i < 10 \text{ V}$$

